



# Tustin Unified School District

## PinnacleOne – Program Manager

Presentation to the  
Citizen's Oversight Committee

January 14, 2004

**PINNACLEONE**

The cornerstone of confidence.™



- **Staffing**

- 1 Fausto Silva, Program Manager – 30 years of professional experience as an architect and as a Program/Project Manager.
- 2 Martin Lopez, Program Controls Manager – Brings over 15 years of experience managing project schedule and cost controls.



- **Mobilization** — Office space has been set-up for us in the Maintenance, Operations, and Facilities building.



- **Responsibility Matrix:**

- 1 Met with staff from the District, Trittipo, and Barnhart.
- 2 Identified Primary and other levels of responsibility for all parties.
- 3 Matrix allows for projects to be administered with or without a CM.



- **Board of Education Meetings**

- 1 Presented at the January 12 Board of Education meeting.
- 2 Will continue to attend and participate in future Board of Education meetings to keep the Board of Education informed of the progress of the Measure G program.



*Students are Number 1!*

- **Program Approach**

1 Phase 1

2 Phase 2



- **Phase 1 Oversight: 12 schools**

- 1 Design document reviews
- 2 Design phase schedule reviews
- 3 Architectural staff augmentation
- 4 DSA review for Group A Schools:
  - Beswick Elementary School
  - Loma Vista Elementary School
  - Guin Foss Elementary School
  - Lambert Elementary School



- **Phase 1 Oversight: 12 Schools**

5 DSA review for Group B Schools:

- Tustin High School
- Foothill High School
- Arroyo Elementary School
- Nelson Elementary School

6 DSA review for Group C Schools:

- Estock Elementary School
- Thorman Elementary School
- Veeh Elementary School
- Hewes Middle School



- **Barnhart, Inc. Activities:**

- 1 Scope of work reviews
- 2 Pre-construction reviews for Phase 1



- **TUSD Activities:**

- 1 Coordination with TUSD staff
- 2 Financial and accounting reviews
- 3 Group A documents' review



*Students are Number 1!*

Activity ID	Activity Description	Rem Dur	Early Start	Early Finish	2003						2004				
					JUL	AUG	SEP	OCT	NOV	DEC	JAN	FEB	MAR	APR	MAY
<b>Group A Projects</b>															
<b>+ Beswick Elementary School</b>															
		61	17JUL03A	05APR04											
<b>+ Loma Vista Elementary School</b>															
		61	17JUL03A	05APR04											
<b>+ Guin Foss Elementary School</b>															
		61	17JUL03A	05APR04											
<b>+ Lambert Elementary School</b>															
		61	17JUL03A	05APR04											
<b>Group B Projects</b>															
<b>+ Tustin High School</b>															
		86	04SEP03A	10MAY04											
<b>+ Foothill High School</b>															
		82	04SEP03A	10MAY04											
<b>+ Arroyo Elementary School</b>															
		86	04SEP03A	10MAY04											
<b>+ Nelson Elementary School</b>															
		86	04SEP03A	10MAY04											
<b>Group C Projects</b>															
<b>+ Estock Elementary School</b>															
		96	15OCT03A	24MAY04											
<b>+ Thorman Elementary School</b>															
		96	15OCT03A	24MAY04											
<b>+ Veeh Elementary School</b>															
		96	15OCT03A	24MAY04											
<b>+ Hewes Middle School</b>															
		96	15OCT03A	24MAY04											



*Students are Number 1!*

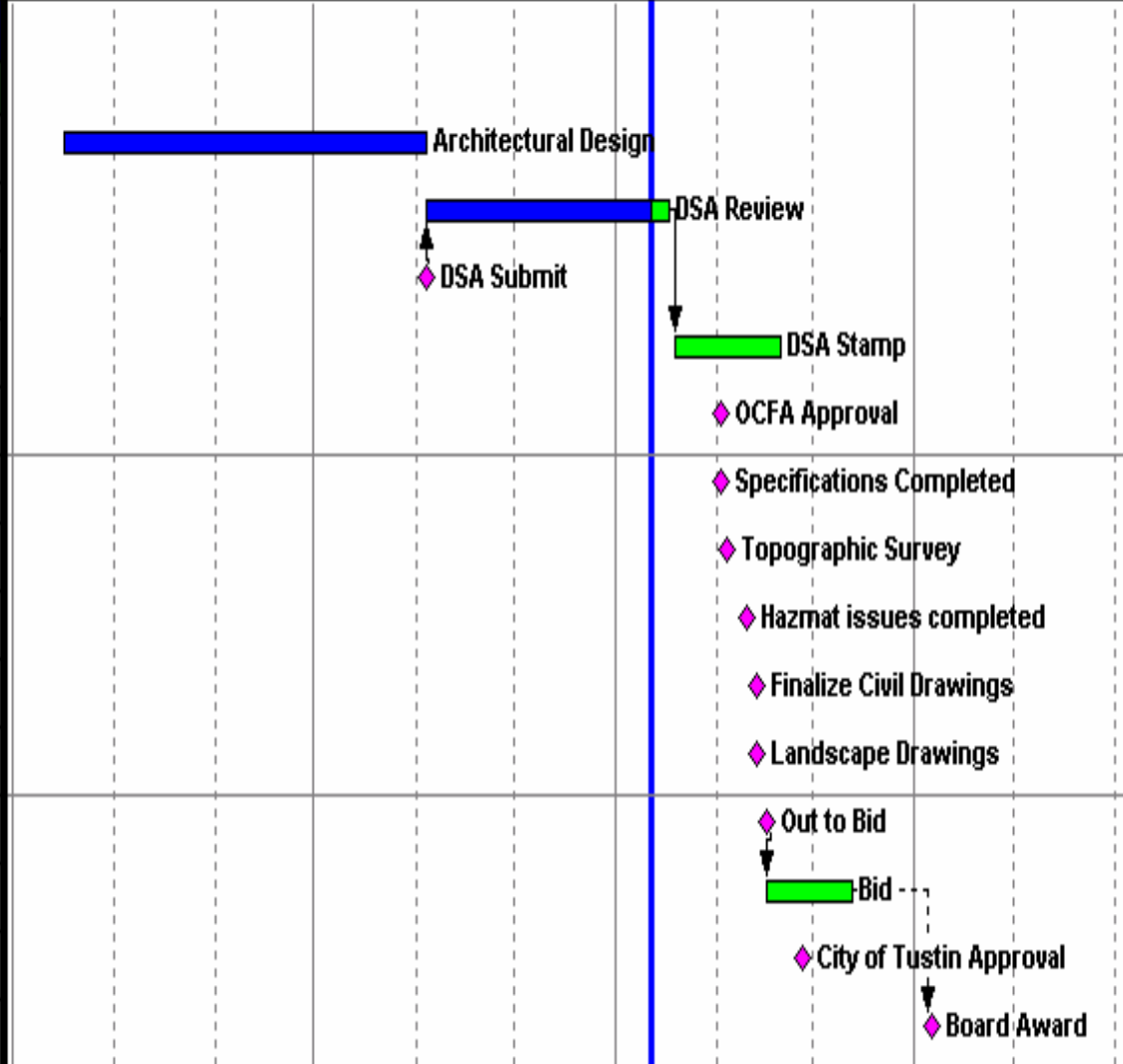
Activity ID	Activity Description	Rem Dur	Early Start	Early Finish
-------------	----------------------	---------	-------------	--------------

2003						2004				
JUL	AUG	SEP	OCT	NOV	DEC	JAN	FEB	MAR	APR	MAY

**Group A Projects**

**Beswick Elementary School**

BES220	Architectural Design	0	17JUL03A	03NOV03A
BES110	DSA Review	5	04NOV03A	16JAN04
BES100	DSA Submit	0	04NOV03A	
BES120	DSA Stamp	24	19JAN04	19FEB04
BES180	OCFA Approval	0	02FEB04*	
BES200	Specifications Completed	0	02FEB04*	
BES170	Topographic Survey	0	04FEB04*	
BES210	Hazmat issues completed	0	10FEB04*	
BES230	Finalize Civil Drawings	0	13FEB04*	
BES240	Landscape Drawings	0	13FEB04*	
BES130	Out to Bid	0	16FEB04*	
BES140	Bid	20	16FEB04	12MAR04
BES190	City of Tustin Approval	0	27FEB04*	
BES150	Board Award	0		05APR04*





- **Phase 2 Planning– 19 Schools**

- 1 Implementation Plan
- 2 Program Management Plan
- 3 Master Schedule
- 4 Master Budget



- **Phase 2 Planning – 19 Schools**

5 Cost Control

6 Document Control System

7 Status Reporting and Communications Management



***Students are Number 1!***

**PINNACLEONE**  
The cornerstone of confidence™



*Helping you build their future.*