



Tustin Unified
School District

**TUSD
BOARD OF EDUCATION**

**MEASURE 'G'
PROJECT
STATUS**

**AS OF
AUGUST 23, 2004**

PINNACLEONE
The cornerstone of confidence.

BESWICK ELEMENTARY SCHOOL CONSTRUCTION PROGRESS PHOTOS



**BUS DROP-OFF DRIVEWAY
NEAR COMPLETION**



**NEW WINDOW FRONT, DOOR,
& SIDEWALK INSTALLATION FOR
ADMINISTRATION BUILDING**



**COMPLETED DOOR / WINDOW ASSEMBLY
& ADA COMPLIANT COUNTERTOP
AT ADMINISTRATION BUILDING**



**RESTROOM INSTALLATION
READY FOR CEILING
PAINTING, LIGHT FIXTURES,
& PARTITIONS**

GUIN FOSS ELEMENTARY SCHOOL CONSTRUCTION PROGRESS PHOTOS



**COMPLETED PARKING LOT
PAVING & IN-PROGRESS LANDSCAPE
INSTALLATION**



**ELECTRICAL CONDUIT TRENCH
READY FOR BACKFILL**



**COMPLETED ADA COMPLIANT
SINK, CABINETS, & NEW VINYL FLOORING**



**COMPLETED RESTROOM
INSTALLATION**

LAMBERT ELEMENTARY SCHOOL CONSTRUCTION PROGRESS PHOTOS



**NEW CABINET & SINK
NEAR COMPLETION**



**NEW DOORS & WINDOWS
INSTALLATION UNDERWAY**



**NEW RESTROOM READY FOR
CEILING PAINTING & STALL
PARTITIONS INSTALLATION**



**PROGRESS IN ELECTRICAL &
JANITORIAL ROOM IN BUILDING "R"**

LOMA VISTA ELEMENTARY SCHOOL CONSTRUCTION PROGRESS PHOTOS



**COMPLETED EXTERIOR DOOR
& WINDOWS IN ADMINISTRATION
BUILDING**



**NEW ADA COMPLIANT
RESTROOM**

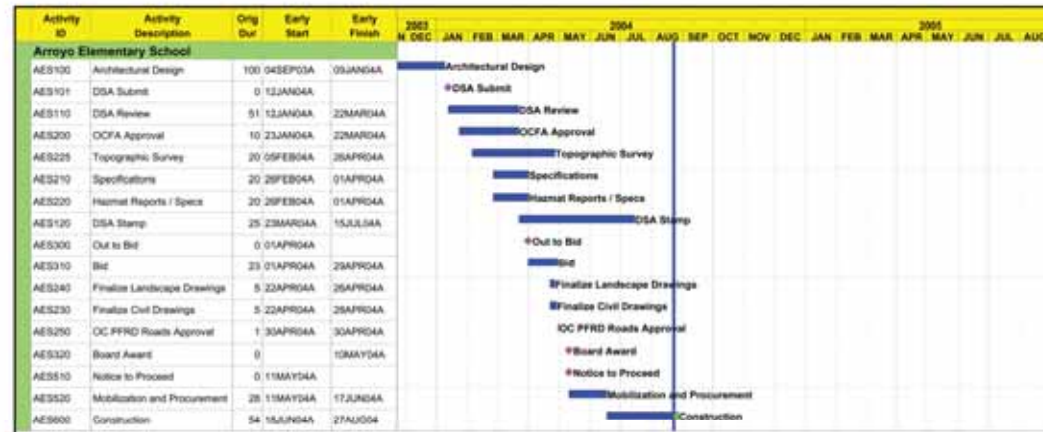


**NEAR-COMPLETION SINK
& COUNTERTOP INSTALLATION
IN CLASSROOM**



**NEW SINK INSTALLATION IN
ADMINISTRATION BUILDING**

ARROYO ELEMENTARY SCHOOL



ARROYO ELEMENTARY SCHOOL CONSTRUCTION PROGRESS PHOTOS



**COMPLETED PARKING PAVING
& IN-PROGRESS PEDESTRIAN
RAMP WORK**



**COMPLETED NEW ADA
COMPLIANT RAMP**



**DISTRICT CLEANING CREWS
GETTING SCHOOL READY FOR
OPENING DAY**



**AREA READY FOR NEW
OUTDOOR DRINKING
FOUNTAIN INSTALLATION**

FOOTHILL HIGH SCHOOL



Activity ID	Activity Description	Orig Dur	Early Start	Early Finish	2001												2002											
					DEC	JAN	FEB	MAR	APR	MAY	JUN	JUL	AUG	SEP	OCT	NOV	DEC	JAN	FEB	MAR	APR	MAY	JUN	JUL	AUG			
Foothill High School																												
FHS100	Architectural Design	100	04SEP03A	09JAN04A	Architectural Design																							
FHS101	DSA Submit	0	15JAN04A		*DSA Submit																							
FHS110	DSA Review	51	15JAN04A	23MAR04A	*DSA Review																							
FHS200	OCFA Approval	10	23JAN04A	23MAR04A	OCFA Approval																							
FHS210	Specifications	20	20FEB04A	01APR04A	Specifications																							
FHS220	Hazmat Reports / Specs	20	20FEB04A	01APR04A	Hazmat Reports / Specs																							
FHS225	Topographic Survey	20	01MAR04A	26APR04A	Topographic Survey																							
FHS120	DSA Stamp	25	23MAR04A	16JUN04A	DSA Stamp																							
FHS300	Out to Bid	0	01APR04A		*Out to Bid																							
FHS310	Bid	24	01APR04A	29APR04A	Bid																							
FHS320	Board Award	0		10MAY04A	*Board Award																							
FHS510	Notice to Proceed	0	11MAY04A		*Notice to Proceed																							
FHS520	Mobilization and Procurement	28	11MAY04A	17JAN04A	Mobilization and Procurement																							
FHS600	Construction	311	18JUN04A	25AUG05	Construction																							

FOOTHILL HIGH SCHOOL CONSTRUCTION PROGRESS PHOTOS



**RESTROOM WORK PROGRESS:
ROUGH PLUMBING IN PLACE &
START OF TILE INSTALLATION**



**ON-GOING ROOF REPLACEMENT
WORK**



**EXTERIOR WORK FOR RESTROOMS
ACCESS**



**TRENCH WORK IN PROGRESS
FOR ELECTRICAL CONDUITS**

NELSON ELEMENTARY SCHOOL

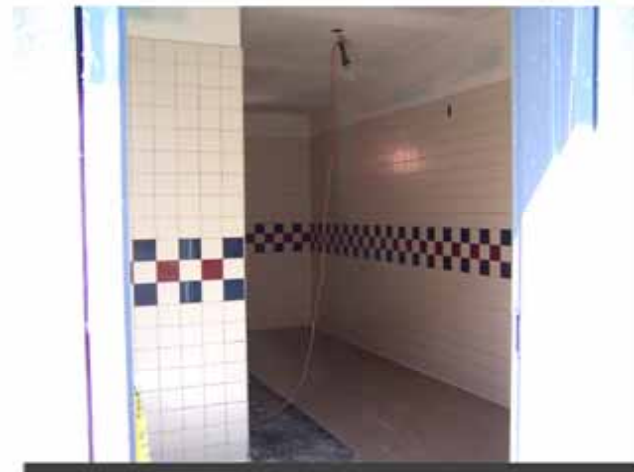


Activity ID	Activity Description	Orig Dur	Early Start	Early Finish	2003												2004											
					DEC	JAN	FEB	MAR	APR	MAY	JUN	JUL	AUG	SEP	OCT	NOV	DEC	JAN	FEB	MAR	APR	MAY	JUN	JUL	AUG			
Nelson Elementary School																												
NES100	Architectural Design	100	04SEP03A	06JAN04A	Architectural Design																							
NES101	DSA Submit	0	12JAN04A		*DSA Submit																							
NES110	DSA Review	81	12JAN04A	15MAR04A	■ DSA Review																							
NES200	OCFA Approval	10	23JAN04A	22MAR04A	■ OCFA Approval																							
NES225	Topographic Survey	20	26JAN04A	12MAR04A	■ Topographic Survey																							
NES210	Specifications	20	20FEB04A	01APR04A	■ Specifications																							
NES220	Hazmat Reports / Specs	20	20FEB04A	01APR04A	■ Hazmat Reports / Specs																							
NES230	Finalize Civil Drawings	5	12MAR04A	02APR04A	■ Finalize Civil Drawings																							
NES240	Finalize Landscape Drawings	5	12MAR04A	02APR04A	■ Finalize Landscape Drawings																							
NES120	DSA Stamp	25	16MAR04A	06APR04A	■ DSA Stamp																							
NES300	Out to Bid	0	01APR04A		*Out to Bid																							
NES310	Bid	23	01APR04A	25APR04A	■ Bid																							
NES250	City of Tustin Review	30	06APR04A	21APR04A	■ City of Tustin Review																							
NES260	Back Check - City of Tustin	20	22APR04A	13JUL04A	■ Back Check - City of Tustin																							
NES200	Board Award	0		10MAY04A	*Board Award																							
NES310	Notice to Proceed	0	11MAY04A		*Notice to Proceed																							
NES320	Mobilization and Procurement	28	11MAY04A	17JUN04A	■ Mobilization and Procurement																							
NES000	Construction	54	18JUN04A	27AUG04A	■ Construction																							

NELSON ELEMENTARY SCHOOL CONSTRUCTION PROGRESS PHOTOS



**PAVED PARENTS' DROP-OFF
AREA WITH SIDEWALK READY FOR
CONCRETE POUR**



**RESTROOM TILE INSTALLATION
WORK UNDERWAY**



**STAFF RESTROOM & ELECTRICAL
ROOM BUILDING WORK**



**NEW SINK INSTALLATION IN THE
KINDERGARTEN AREA**

TUSTIN HIGH SCHOOL



TUSTIN HIGH SCHOOL CONSTRUCTION PROGRESS PHOTOS



**MODIFIED REST AREA IN
ADMINISTRATION BUILDING**



**ATTENDANCE ROOM AREA
READY FOR NEW CASEWORK
INSTALLATION**

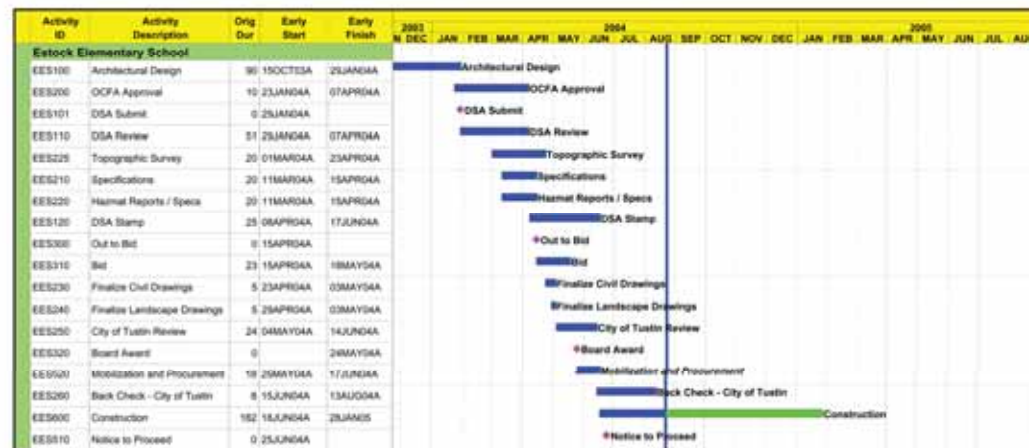
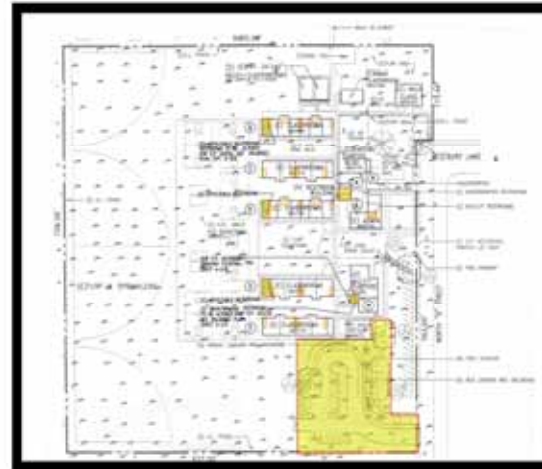


**AREA READY FOR NEW SINK
& CABINETS FOR THE STUDENT
ACTIVITY ROOM**



**WORK FOR STAFF RESTROOMS
IN ADMINISTRATION BUILDING**

ESTOCK ELEMENTARY SCHOOL



ESTOCK ELEMENTARY SCHOOL CONSTRUCTION PROGRESS PHOTOS



NEW PARKING LOT READY FOR NEW LIGHT POLES



NEAR-COMPLETION STAFF RESTROOM BUILDING



CLEANING ACTIVITIES IN CLASSROOMS



COMPLETED OUTDOOR DRINKING FOUNTAIN

HEWES MIDDLE SCHOOL



Activity ID	Activity Description	Orig Dur	Early Start	Early Finish	2003												2004												2005											
					DEC	JAN	FEB	MAR	APR	MAY	JUN	JUL	AUG	SEP	OCT	NOV	DEC	JAN	FEB	MAR	APR	MAY	JUN	JUL	AUG	JAN	FEB	MAR	APR	MAY	JUN	JUL	AUG							
Hewes Middle School																																								
HE3100	Architectural Design	90	15OCT03A	25JAN04A	Architectural Design																																			
HE3200	OCFA Approval	10	25JAN04A	07APR04A	OCFA Approval																																			
HE3101	DSA Submit	0	25JAN04A		*DSA Submit																																			
HE3110	DSA Review	51	25JAN04A	07APR04A	DSA Review																																			
HE3225	Topographic Survey	20	01MAR04A	28MAR04A	Topographic Survey																																			
HE3210	Specifications	20	01MAR04A	15APR04A	Specifications																																			
HE3220	Technical Reports / Specs	20	11MAR04A	15APR04A	Technical Reports / Specs																																			
HE3120	DSA Stamp	25	06APR04A	30APR04A	DSA Stamp																																			
HE3300	Out to Bid	0	15APR04A		*Out to Bid																																			
HE3310	Bid	23	15APR04A	18MAY04A	Bid																																			
HE3320	Board Award	0		24MAY04A	*Board Award																																			
HE3510	Notice to Proceed	0	25MAY04A		*Notice to Proceed																																			
HE3520	Mobilization and Procurement	18	25MAY04A	17JUN04A	Mobilization and Procurement																																			
HE3600	Construction	182	18JUN04A	28JAN05													Construction																							

HEWES MIDDLE SCHOOL CONSTRUCTION PROGRESS PHOTOS



**ROUGH PLUMBING WORK &
FRAMING UNDERWAY AT STAFF
RR IN ADMINISTRATION BLDG.**



**PROGRESS WORK FOR ADA
COMPLIANT EXIT WAY RAMP
& DRINKING FOUNTAIN**

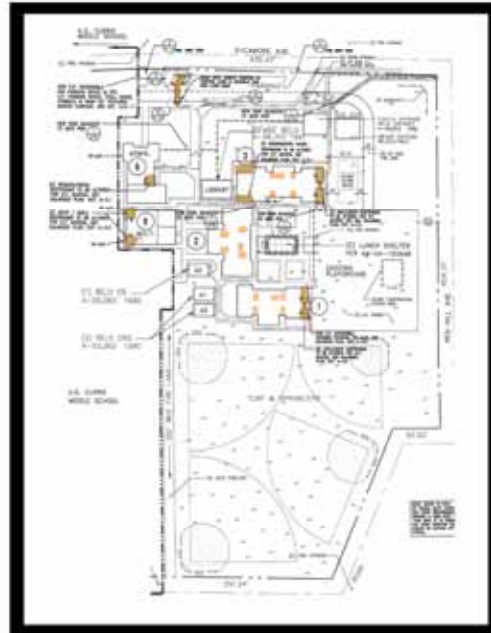


**COMPLETION OF ADA
COMPLIANT RAMP & WALKWAY**



**READY / INSTALLED TEMPORARY
RESTROOM UNIT WITH
ADA COMPLIANT STALL**

THORMAN ELEMENTARY SCHOOL



THORMAN ELEMENTARY SCHOOL CONSTRUCTION PROGRESS PHOTOS

**COMPLETED
ELECTRICAL
TRENCH
WORK**



**TEMPORARY RESTROOM
INSTALLATION FOR STUDENTS
READY ON SITE**

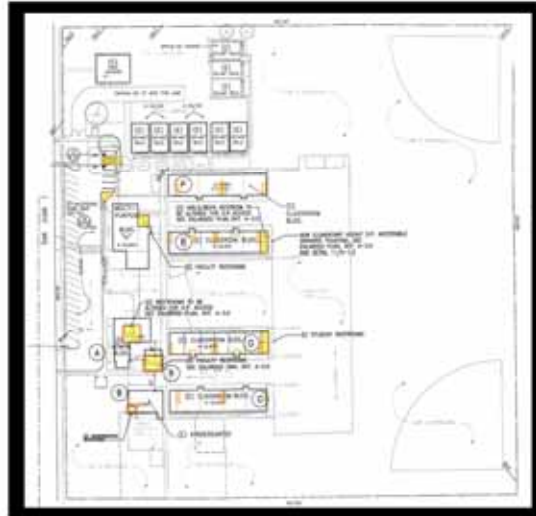


**COMPLETED UNDERGROUND
ELECTRICAL VAULTS &
CONDUITS INSTALLATION**

**WORK IN PROGRESS - INSTALLATION
OF ADA COMPLIANT CABINET
WITH SINK**



VEEH ELEMENTARY SCHOOL



VEEH ELEMENTARY SCHOOL CONSTRUCTION PROGRESS PHOTOS



**WORK IN PROGRESS FOR NEW
STAFF RESTROOMS, ELECTRICAL, &
JANITORIAL ROOMS IN BUILDING "R"**



**ELECTRICAL TRENCH
BACKFILLING & SITE CLEAN-UP
ACTIVITIES**



**INSTALLATION OF UNDERGROUND
FIRE ALARM CONDUITS &
ELECTRICAL VAULT**



**PROGRESS OF RESTROOM
MODERNIZATION WORK -
TILE INSTALLATION UNDERWAY**



PINNACLEONE
The cornerstone of confidence™

**For more information visit our website at:
www.tusdmeasureg.org**

